



INMOTION E-SCOOTER

L8

USER MANUAL

INMOTION TECHNOLOGIES CO.,LTD

www.imscv.com

***i*NMOTION**

Catalog

1 Introduction	1
1.1 Overview	1
1.2 Related Documents and Materials	1
1.3 Signs and Words of Caution	1
2 Product Overview	1
2.1 Product Serial Number	1
2.2 Product Dimensions	2
2.3 Product Parameters	3
2.4 Product Structure	4
2.5 Packing-list Check	5
2.6 How to Unfold	5
2.7 Display Screen	7
2.8 INMOTION APP	7
2.9 Pairing with INMOTION APP	8
2.10 Working Modes	8
3 Battery and Charger	9
3.1 Battery Specifications	9
3.2 How to charge the Scooter	9
3.3 Tips for charging Safety	9
3.4 Protection against Over-discharging	10
4 How to ride the scooter	10
4.1 Riding the scooter	10
4.2 Precautions before riding	10
4.3 How beginner gets started	11
4.4 How to fold the scooter	11
4.5 Switch off the lamp and shut off the scooter	12
4.6 Precautions for Safe riding	13

5 Care and Maintenance	13
5.1 Storage	13
5.2 Cleaning	13
5.3 Recycle	14
5.4 Inflation and Replacement of the Interior and Exterior Tires	14
5.5 Tighten the handlebar	14
6 Contact Information	14
6.1 Feedback of issue	14
6.2 Contact us	14
6.3 The Local Laws or regulations	14
6.4 Version Number of Scooter	14
7 Legal Statement	15
7.1 Statement of Product	15
7.2 Statement of Personal Information Protection	16
7.3 Intellectual Property Statement	17
8 Warranty	17

1.Introduction

1.1 Overview

For your safety, please read this manual carefully before riding and make sure your operation is correct with this guidance.

If you have any questions or you cannot find the related information you need in this manual, please contact your purchase point or the after-sale service staff of the manufacturer (INMOTION).

1.2 Related Documents and Materials

The document in PDF format of “User Manual”, INMOTION APP and other helpful files could be downloaded from the official website of Shenzhen INMOTION Technologies CO., Ltd.: www.inmotionworld.com.

1.3 Signs and Words of Caution

The Following descriptions are applicable all through this manual, and the “Warnings” and “Notes” deserve your special attention.

Warning! Warns you about the actions that may result in personal injury.

Note: Identifies important points, helpful hints, special circumstances, or alternative methods.

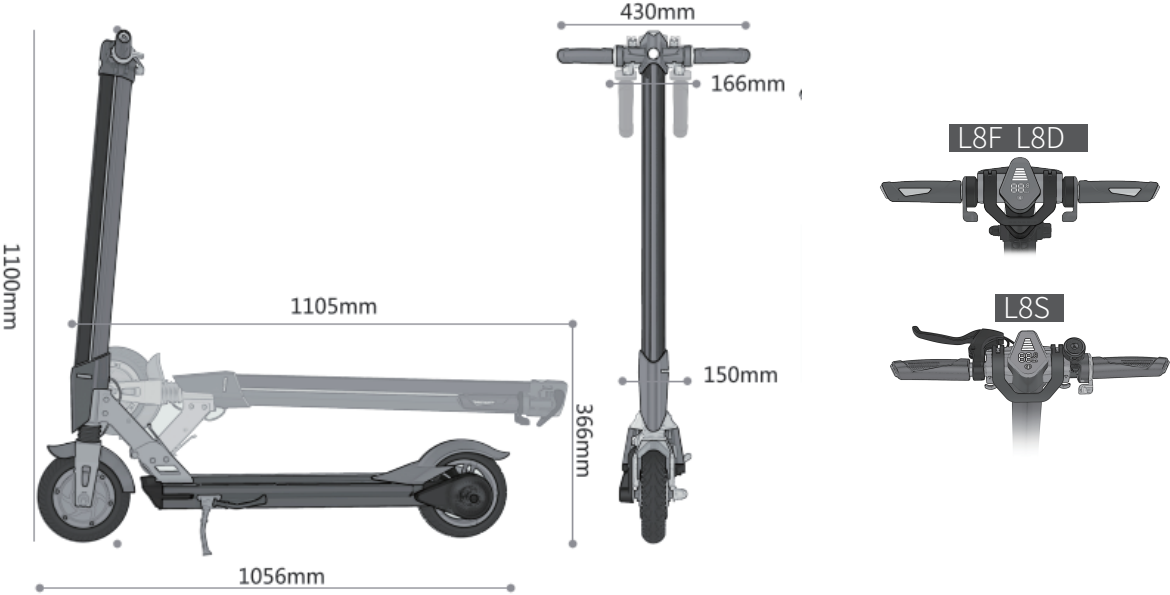
2 Product Overview

L8F is a cool, highly efficient and economical personal transportation product. With its stylish and futuristic appearance, superb shock mitigation design and powerful Lithium battery, it was created to bring you wonderful riding experience.

2.1 Product Serial Number

A Serial Number (S/N) is the unique identity of each product, it would be used for quality tracking, after-sales service, etc. Keep the record of the S/N and make sure not to lose it. The S/N could be found at the following positions: the outer package, the body of L8F.

2.2 Product Dimensions



2.3. Product Parameters

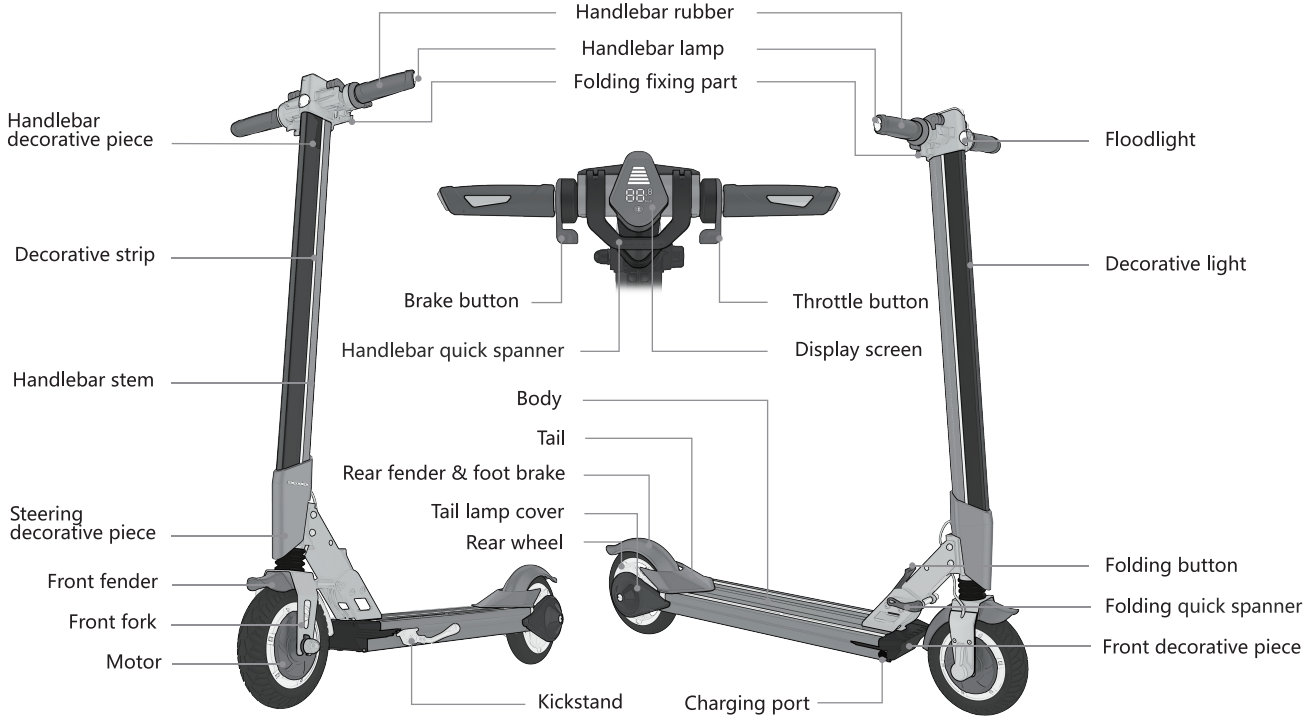
Product Model	L8F	L8D	L8S
Factory Default Speed	25Km/h	25Km/h	25Km/h
Maximum Speed	Approx. 28Km/h ①	Approx. 28Km/h ①	Approx. 28Km/h ①
Endurance Mileage	Approx. 35Km ②	Approx. 30Km ②	Approx. 35Km ②
Max. Gradient(%)	Approx. 15	Approx. 15	Approx. 15
Net Weight	Approx. 13Kg	Approx. 13Kg	Approx. 13Kg
Max. Load Capacity	100Kg	100Kg	100Kg
Overall Dimentions	1056*430*1100mm	1056*430*1100mm	1056*430*1100mm
Rated Power of Motor	250W	250W	250W
Battery Spec	36V 8.7Ah Lithium Battery	36V 7.5Ah Lithium Battery	36V 9.0Ah Lithium Battery
Charging Requirements	100-240V AC 50/60Hz	100-240V AC 50/60Hz	100-240V AC 50/60Hz
Charging Time	Approx. 5 hours ③	Approx. 4.5 hours ③	Approx. 5.5 hours ③
Tire Types	8" Solid tire for the front wheel and 8" pneumatic tire for the rear	8" Solid tire for the front wheel and 8" pneumatic tire for the rear	8" Solid tire for the front wheel and 8" pneumatic tire for the rear
Brake Types	Electronic brake and Foot brake	Electronic brake and Foot brake	Electronic brake and Drum brake
Optimal Operating Temperature	-10~40°C	-10~40°C	-10~40°C
Protection Grade	IP54	IP54	IP54

Remarks: ① You can set the maximum cruising speed (no more than 28Km/h) with mobile telephone App. The maximum cruising speed is measured at the temperature of 25°C, the payload 70Kg, full electric voltage and flat pavement. The factors like driving habit, environmental temperature, road surface condition, payload etc. will affect the actual maximum cruising speed.

② The travelling range is measured at temperature of 25°C, Tire pressure 3.0bar, cruising speed 15Km/h, the payload of 75Kg and flat pavement. The factorrs like driving habit, environmental temperature, road surface condition, payload etc. will affect the continuous travel mileage. Different models will also make different continuous travel mileages.

③ Charging time varies with the ambient temperature and the battery capacity that may change in the course of time.

2.4 Product Structure



2.5 Packing-list Check

The default packing of the E-scooter includes the following components, please check at your purchase point in case of anything missed.

* 1x Scooter main body * 1x Charger * 1x User Manual

WARNING!

It may result in damage to the scooter or even personal injury if using the unauthorized parts/ components or parts/components installed incorrectly. To ensure product quality and safety, all parts will be subject to the approval by the manufacturer (INMOTION), and assured to be correctly mounted.

Please do NOT try to ride on a scooter that is not installed correctly, effectively and completed.

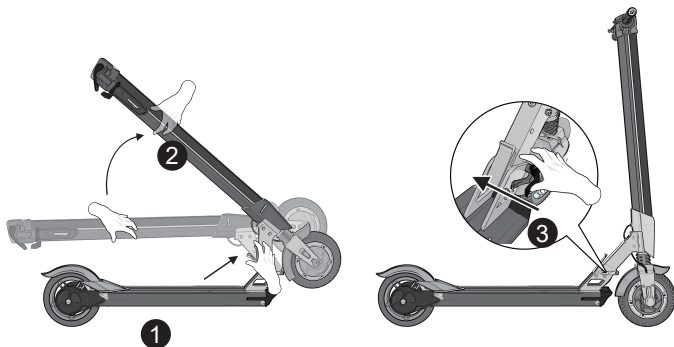
Do NOT disassemble, refit scooter without permission, otherwise, it may cause irreparable damage to the scooter or result in personal injury.

2.6 How to Unfold?

Step 1: Loosen the Quick-release wrench,

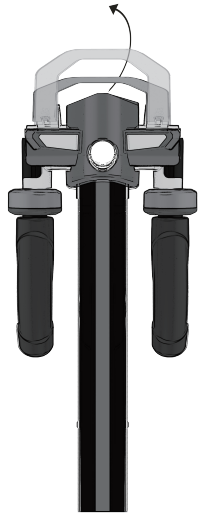
Step 2: Press down the Folding-wrench

Step 3: Lift the Front-rod until it gets stuck, then tighten the Quick-release wrench.

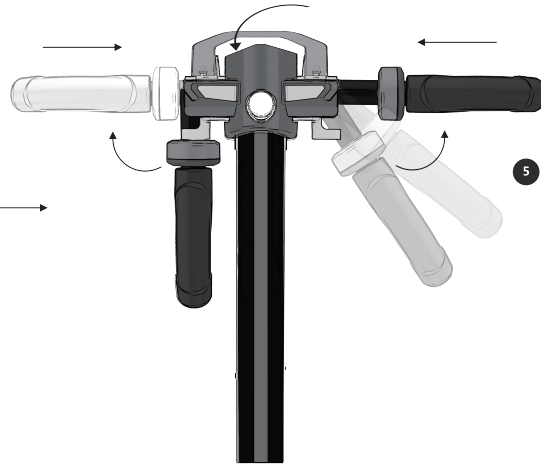


Step 4: Open Handlebar Quick Spinner, then rotate the hand out to the side, insert into the middle, push back the handle Quick Spinner.

4 Open Handlebar quick spinner



7 Pressing Handlebar quick spinner

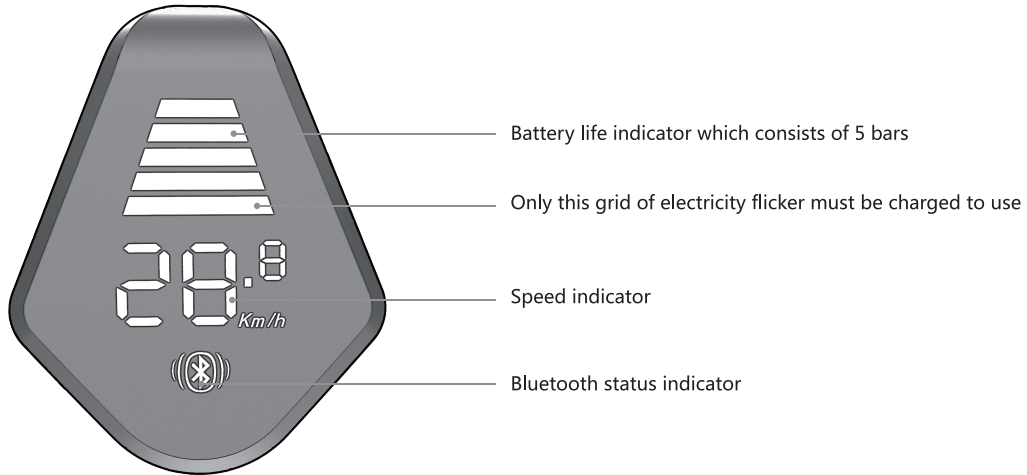


6 Inserted into the middle

5 Rotate the hand out to the side

2.7 Display Screen

The LED display screen is used to indicate the operation status of scooter:



2.6 INMOTION APP

The INMOTION APP is a mobile Application specially designed by INMOTION to users and can be used to control the scooter, make friends, send message, take part in INMOTION campaigns, and purchase INMOTION accessories, etc.

The INMOTION APP can be downloaded from the official website of INMOTION or the related APP stores (Apple App Store for iOS devices; Google Play for Android devices.)

Features and Functions

*Scooter control: Locking, Unlocking,

*Scooter Status Indication: Speed, Range, Battery, etc,

* Scooter Parameters settings: Lighting Color, Max. of speed, riding mode, etc,

* Fault Detection: Self-detection the working status of a scooter.

*After-sales service: Communicate with manufacturer's service staff, get the solution to fix the problem promptly.

*Firmware updating: Checking the latest firmware and updating it with an internet connection.

*For more details about the functions of App, please refer to tips and help information contained inside, or download from the manufacturer's website (INMOTION) and read the related instruction about App. Besides, new features will be added to the APP a timely.

2.9 Pairing with INMOTION APP

Power on the scooter and start the APP, Search the devices and select the target product (scooter),

Click the connection and enter the initial password: 000000

Pairing succeeds until the icon  displayed on the scooter.



Download APP

2.10 Working Modes

The scooter could work in 3 different modes,

Working mode	Description
Accelerator mode	Accelerator press to achieve acceleration, the factory default for this mode, can be switched to other modes via mobile phone APP.
Locked mode	When L8 is parked normally and connected to your mobile phone, you can switch the scooter to locked mode by operating on your phone. In this mode, the throttle will cease to function. Only by operation via the connected mobile phone, can the scooter be released from this mode.
Error handling mode	This mode will be activated automatically when the system detects some error or warning and in this case the system will take control of the scooter and bring it to a stop, and the same time, L8 will be flashing red light warning. After stop, please put L8 for a period of time, reboot. If still can not be normal use, please contact INMOTION Service.

Note: Even the scooter is powered off, the related App settings will be stored.

3 Battery and Charger

3.1 Battery Specifications

A Serial Number (S/N) is the unique identity of each product, it would be used for quality tracking, after-sales service, etc. Keep the record of the S/N and make sure not to lose it. The S/N could be found at the following positions: the outer package, the body of L8F.

Product Model	L8F	L8D	L8S	Remarks: ① The Voltage here refers to the voltage with moderate capacity of a Lithium battery.
Battery Type	Lithium Batteries	Lithium Batteries	Lithium Batteries	
Rated Voltage	36V ①	36V ①	36V ①	
Charging Voltage	42V	42V	42V	
Battery Weight	Approx. 2.0Kg	Approx. 2.0Kg	Approx. 2.0Kg	
Dimensions	L:W:H: 330*81*45	L:W:H: 330*81*45	L:W:H: 330*81*45	
Charging Temperature	5~45°C	5~45°C	5~45°C	
Protection Grade	IP67	IP67	IP67	

3.2 How to charge the Scooter?

Step 1: The charging port located on one side of the scooter footboard. Open the charging cover, and make sure the charging port is dry.

Step 2: Insert the power cable into the charging ports.

Step 3: When the indicator of a charger is on (red color), it means charging. When the indicator turns green, it means the battery is fully charged. Stop charging at this time, because over-charging would affect the lifetime of batteries.

3.3 Tips for charging Safety

Please recharge the batteries every THREE months or each time after riding, to extend the lifetime of batteries to the maximum. Make sure to charge it under a suitable temperature environment.

The battery damages may be caused by failure to recharge on time. As time goes by, the capacity of the battery will be gradually used up, and finally, lead to over-discharging.

Please use the battery, charger and power cable supplied by the original manufacturer, to avoid over-discharging risk.

Please make sure the connection is correct with the designated cable on charging.

Please make sure to be on charging under the well-ventilated environment.

Please make sure to be on charging under the dry environment. Never let the charger or cable approach to water, which may cause an electric shock. Do NOT touch it with wet hands. Pull out the power- plug immediately in the occurrence of any failure on charging.

After charging completed, please pull out the plug, do NOT pull out the plug by the cable.

Please do NOT allow the charger or cable to approach the sharp or hot object.

Check the charger and charging cable by regular visual inspection

In case of any obvious damages found on the charger or cable, do NOT use it to avoid further impairment and contact with the manufacturer.

Please do NOT repair the batteries, charger or cable by oneself, contact with purchase points or manufacturer for support in case of any problems.

3.4 Protection against Over-discharging

The smart over-discharging protection system was built-into the scooter, which could cut off the power actively when the scooter is in locking state or shutdown state and low power. The scooter needs to be awakened via charging once under the over-discharging protection state. If the scooter remains un-awakened state after half an hour's charging, please contact the purchase of point or manufacturer for support.

4 How to ride the scooter?

4.1 Riding the scooter

Users are suggested to learn from this manual before the first riding, to avoid any unpredictable injuries. These instructions were made for the new scooter riders, stating in detail how to ride the scooter correctly, and matters need more attention on riding are listed as well. Users shall read them carefully and ride the scooter by the instructions.

4.2 Precautions before riding

The abrasion will happen on riding and parking, this may affect the performance of the scooter. Here is the checking list before riding the scooter:

- * All parts shall be checked to make sure they are fixed securely and intact without damage.
- * The folding mechanism is locked
- * Battery is not in low-power state.
- * Make sure the handle is fixed, loosened bolts/ screws are tightened.
- * Sufficiently Check the surrounding driving environment, make sure it's free from the disturbance of cars, walker, pet, bikes and other obstacles.
- * Do NOT ride on a slippery and wet field.
- * Safety helmet and protecting articles against the possible are suggested.

WARNINGS!

The brake performance may be affected by moisture. After Cleaning the body, dry the brake at a safe place by air.

*Scooter is not allowed to ride under severe weather conditions (like raining, snowing or icy).

* Make sure the brake work normally Before riding the scooter under any circumstance.

4.3 How beginner gets started?

Hold the handlebar with two hands, slide the scooter to power on.

After powered on, the front decorative lights and taillights will be lighted on.

Step on the footboard with one foot, watch ahead, another foot shall be on the ground and slide forwardly, to give the scooter an initial velocity. Once the speed control is activated, the scooter could be accelerated to move forwardly by press the key of the throttle.

At that time, another foot also steps on the footboard. Two feet stand in staggered way front and back. Stands upright naturally and two eyes watch ahead horizontally, like standing on the ground. Keep the balance of the body.

Lightly press the accelerator key for acceleration. The degree of acceleration depends on holding a degree on the accelerator. Beginners shall lightly hold the accelerator key and accelerate slowly.

Due to the length of L8, do NOT make a turn in the narrow space.

On riding, press the brake key to decelerate the scooter or stop it.

At the same time, stepping on the rear fender by one foot, the scooter could be slowed down or stop.

Press brake key, the accelerator will become invalid automatically.

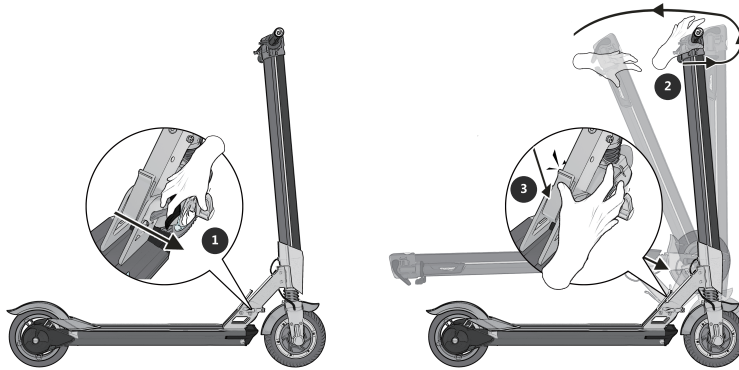
If the scooter has no operation within 1 minutes, the scooter will be automatically shut down.

4.4 How to fold the scooter?

1.Open the Quick-release wrench,

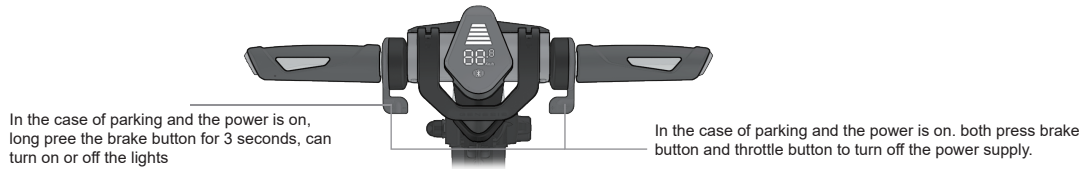
2.One hand holds the Front-rod and the other hand holds the Square-tube. Push forward the Front-rod and Press down the Folding-wrench. Then pull back the Front-rod after pressing the Folding-wrench

3.Fold down the Front-rod until it gets stuck.



4.5 Switch off the lamp and shut off the scooter

1. Open the Quick-release wrench,
2. One hand holds the Front-rod and the other hand holds the Square-tube. Push forward the Front-rod and Press down the Folding-wrench. Then pull back the Front-rod after pressing the Folding-wrench
3. Fold down the Front-rod until it gets stuck.



4.6 Precautions for Safe riding

The riding risk may occur if users do NOT operate by the safety warnings in this manual. Anywhere or anytime, falling, out of control or bumping, and operation not complying with the user manual, may cause injuries, even death. To reduce risks and avoid injuries, users must read this manual carefully and learn the related safety video and comply with the following precautions.

- * Please wear helmets and protection equipment on riding.
- * Please do NOT ride on the slopes over 15% gradient. Do NOT sharply accelerate or decelerate on slopes.
- * Protect yourself from obstacles and slipping on the road surface. Do NOT ride on the grass and cobbled road.
- * Forbid riding a scooter to go up or down steps.
- * Forbid soaking in water.
- * The scooter is designed for one single person riding, several persons ride on it at a time is prohibited.
- * Make sure the scooter is not low-power and the tire pressure (3.0bar) is normal.
- * Do not ride faster over the speed limitation specified by the local laws.

5 Care and Maintenance

5.1 Storage

The lifespan of Lithium battery and other hidden dangers may be caused by the unreasonable storage environment. It's recommended to put scooter at the dry places with suitable humidity and temperature.

- * Avoid to put the scooter at the places with strong sunshine (even the trunk of vehicle), the temperature of battery may be risen up to 50 C, which is harmful to the performance of battery and lifespan of scooter.
- * The battery will discharge automatically even not powered on. It's suggested to monitor the remaining capacity of battery within THREE month and recharge in time. The irrevocable loss may be caused by battery under the long-time low-power status.
- * The battery may be discharged faster than usual caused by the low temperature in Winter.
- * It's recommended to fully charge the scooter before a long-time storage.

5.2 Cleaning

- * Power off the scooter before cleaning, meanwhile make sure the charging wire pulled up and the charging port be covered, to avoid water splash into the battery-charging port.
- * Clear the outer cover of scooter with soapy water and soft cloth. Do NOT swash the scooter with high-pressure water gun. The waterproof grade of scooter is IP55, spilling resistant and dust resistant. It's not allowed to dip the scooter into water, otherwise the permanent damage may be caused by this.

5.3 Recycle

*Battery and electric components shall not be treated as general rubbish, to avoid bring the unwanted pollution to environment.

*Please recycle the scooter and the related components (battery) via the authorized processing facilities.

5.4 Inflation and Replacement of the Interior and Exterior Tires

*Please re-fill in time to make sure the tire pressure be normal.

* Contact your purchase point to buy new tires.

5.5 Tighten the handlebar

If the left or right handlebar is loose, please use M4 six-angel wrench to tighten the two screws on the bottom side of quick-release wrench.

6 Contact Information

6.1 Feedback of issue

If any questions or suggestion to our scooter, please feel free to contact us.

6.2 Contact us

Shenzhen INMOTION Technologies Co., Ltd.

Address: 18F, Building B1, No. 1001, Xueyuan Ave., Nanshan District, Shenzhen, China

Tel: +86-755-2690 6865

Email: info@imscv.com

6.3 The Local Laws or regulations

Please check the local laws or regulations before riding the scooter on the public road.

6.4 Version Number of Scooter

Version 1.1

7 Legal Statement

7.1 Statement of Product

To ensure a safety and good experience, please comply with the following requirements when ride the scooter.

Make sure read carefully and fully understand this User Manual before riding.

* The scooter is designed for age of 12~60.

* Pregnant women or people with psychological unfitness is not recommended to ride the scooter.

* Stop riding right away once feel unwell physically or mentally due to illness or under the influence by medicine or alcohol.

* The scooter is designed for one single rider, and not allow to carry two or more persons, or hold a child or a heavy load on riding.

* Assemble all components properly in accordance with the assembly instructions described in this User Manual. The dangers (risks of loss of control, collision or fall-off) may be caused by improper assembly. Take care and apply appropriate force while assembling the scooter, damage to the scooter or malfunctions may be caused by screwing too tight or too light.

Warnings: do NOT assembly the scooter while it's powered on.

* Do NOT try to modify or repair the scooter by yourself if no guidance.

* Before riding, make sure no abnormalities (loose parts, damage or malfunctions) on scooter. And please check the tire pressure once each month and check again before starting a long-distance riding.

*If any parts loosen, damaged, abnormality or malfunction found on riding, stop it immediately, mark the troubleshooting and repair timely to avoid any possible dangers.

*Make sure the charging port is dry and clear before charging, and input of 100~240V/50~60Hz is correct for charging. keep children and pets away from the scooter on charging and make sure no inflammable materials nearby.

*The battery must be stored in the temperature environment -20 C ~45 C . Once the ambient temperature falls below -20 C , the battery will be in self-locked state automatically, and not able to be charged or used. Take the scooter to a warmer place, in order to unlock the battery for charging and using.

*If any leakage or other abnormalities (including breakage, emission of odd smell or smog, overheat, etc.) happened, stop ride the scooter immediately and prevent the battery from other objects.

Without permission, never try to open or disassemble the battery, or perform any irrational operations on it or use it in an irrational way.

Depending on the battery state and environmental conditions, the fully charged scooter is able to keep standby in 90 days. Keep this in mind and avoid the irreversible damage to the battery caused by failure to charge it timely.

Do NOT wear high heels or other unsuitable shoes, too loose or other unfit clothes on riding, and it's always recommended to wear the protective gears.

Never ride the scooter in rainy weathers or on wet roads. The wet and slippery roads may reduce the tires' resistance and lengthen the scooter's braking distance.

It's difficult for riders and pedestrians to notice each other timely at night or other environments with poor light, please be careful to avoid any possible dangers.

Do not ride the scooter up/downstairs, inside elevator, passing through the revolving door or any other unsafe conditions or environments.

Always watch out the overhead obstacles on riding.

Do NOT take the risk to ride on the abrupt slope, un-even road or any other unusual terrain.

Do not make a turn at the high speed or brake suddenly on a slippery ground.

For safe riding, please pay your attention to nearby vehicles, pedestrians, potholes, sewer covers, railroads, construction areas on the road or sidewalk, debris or other obstacles.

Never make or answer a call or do any other things which may distract your attention to surroundings.

7.2 Statement of Personal Information Protection

The personal information including but not limited to your name, gender, age, address, contact information, occupation, when and where you use our product. All information is collected during you use of the INMOTION APP. The information collected can provide you with better products and services and enhance your user experience.

Any of the following conditions shall be deemed as your consent for us to provide your personal information to the relevant third party:

- 1) With your special authorization
- 2) Comply with relevant legal requirements or mandatory requirements proposed by government agencies (including judicial agencies)
- 3) Enforce available terms of service (including investigating possible violations)
- 4) Dealing with fraud, security or technical issues
- 5) Protect the rights, property or safety of users or the public from damage to the extent required or permitted by law
- 6) Special and / or emergency needs.

For your better use and you agree that INMOTION and affiliated companies may push you information about products and related activities from time to time. We will use reasonable and secure measures to protect your personal information from unauthorized disclosure and use. We will also require those who use your personal information to strictly protect the security of your personal information.

7.3 Intellectual Property Statement

Unless otherwise provided by laws and regulations, or as otherwise agreed in the agreement, our company's intellectual property(including but not limited to copyrights, trademarks, patents and applications, the right to apply, the right to implement, the right to license) all rights reserved, must not be used illegally without our company's prior written consent.

This statement applies to the laws of the People's Republic of China.

For all claims, liabilities and losses caused by consumers and any third party's violation of this legal statement, the company shall not bear any liability and compensation.

This legal statement forms an integral part of our products (be sure to forward them when reselling them).

If you use our products, you are deemed to agree to accept all the terms of this legal statement and bear any possible risks and liabilities.

If you do not agree to accept all the terms of this legal statement after purchasing our products, please do the return processing and ensure that the product and packaging when you return the product are intact and will not affect the secondary sales.

8 Warranty

The warranty service will be provided by Inmotion local partners, please kindly check your Purchase Point, or email us at: service@imscv.com.