

**HERO**  
MOBILITY REDEFINED



**Model: Hero S9**

<b>Warnings &amp; General information</b> .....	<b>2-3</b>
<b>HERO Features</b> .....	<b>4-5</b>
<b>HERO S9 Main parts</b> .....	<b>6</b>
<b>Serial Number</b> .....	<b>7</b>
<b>Technical Parameters</b> .....	<b>8</b>
<b>Opening HERO S9</b> .....	<b>9-10</b>
<b>Operation</b> .....	<b>11-12</b>
<b>Throttle Operation</b> .....	<b>13-15</b>
<b>Light Operation</b> .....	<b>16</b>
<b>Safety</b> .....	<b>17</b>
<b>Driving Technique</b> .....	<b>18-19</b>
<b>Folding mechanism adjustment</b> .....	<b>20-21</b>

## READ THIS MANUAL

### WHY IS IT NECESSARY TO READ THIS USER MANUAL ?

This Manual was written to help you understand the proper use and maintenance of HERO S9 electric scooter.

It is important for you to understand your new HERO; its features and performance, so that you will enjoy the most from your first and every ride. Also, it is important that your first ride with HERO S9 will be in a remote location, without any obstacles.

The Hero S9 requires a short adjustment and break-in period for all moving parts to adjust themselves into their correct position

**Before Riding:** Ensure that the Folding Lever is firmly locked in place and that the safety lock is on.

### WARNING !

**The responsibility for HERO S9 maintenance is yours, and will help reduce risks of injuries.**

**Therefore, read this manual and follow its instructions, they will help you reduce risks.**

## **DISCLAIMER**

Hero Technology is not liable for any accidental damages related to the use of this product.

## **BEFORE RIDING**

Ensure that the Folding lever of the folding mechanism is firmly locking the folding mechanism

## **GENERAL WARNING**

- Wear a helmet when riding HERO
- Always follow the local laws and regulations
- Never ride your scooter in conditions of poor visibility
- Do not do stunts, wheelies or jumps. They increase your chances of injury and damage your HERO.
- Do not carry passengers.

# HERO S9 APPEARANCE



# HERO S9 FEATURES



# HERO S9 MAIN PARTS



**WATERPROOF CONNECTORS AND WRAP**



**FRONT AND REAR DRUM BRAKES**



**BATTERY CHARGER CONNECTOR**



**SPEED CONTROL THROTTLE WITH LCD DISPLAY AND FUNCTIONS**



**ACRYLIC LIGHT DISPLAY**



**QUICK FOLDING MECHANISM**

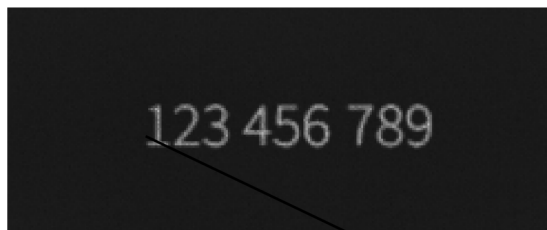
## RECORD SERIAL NUMBERS:

Write down the serial number of your HERO Series Scooter. Keep this information separately and a safe place.

Each HERO has a unique serial number. These numbers can provide information that may be useful later on for insurance claims and in case of loss or theft.

To find your HERO serial number:

1. The number is on the below side of the board
2. Note the seial number here and keep it in safe place





<b>Product Number</b>	<b>HT-S9</b>		
<b>Product Name</b>	<b>Hero S9</b>		
<b>Product Size</b>	<b>1275 x 1100 x 560mm</b>		
<b>Body Frame</b>	<b>Areospace Aluminium Alloy T6061</b>		
<b>Motor Power</b>	<b>48V600WATT</b>		
<b>Car Grade Battery</b>	<b>48V13AH</b>	<b>48V16AH</b>	<b>48v21AH</b>
<b>Max Mileage</b>	<b>40KM/ 26MILES</b>	<b>50KM / 31MILES</b>	<b>60KM / 37MILES</b>
<b>Max Speed</b>	<b>45km/h   28MPH</b>		
<b>Max Gradeability</b>	<b>15 degree up hill</b>		
<b>Light</b>	<b>2 x LED Front Light + 2 x Acrylic Light + 2 x LED Rear Light &amp; Brake Light</b>		
<b>Tires</b>	<b>215 x 55mm (8.5 x 2.2 inch) Inflatable Wheel</b>		
<b>Braking</b>	<b>Front Drum Brake + Rear Drum Brake + Electric Magnetic Brake</b>		
<b>Suspension</b>	<b>2 x Spring Piston Suspension ( Front and Rear Suspension)</b>		
<b>Dashboard</b>	<b>Smart LCD Display</b>		
<b>Folding</b>	<b>5 Sec Folding</b>		
<b>Charger</b>	<b>CE, UL, FCC Approved Charger</b>		
<b>Product Weight</b>	<b>N.W: 20KG G.W: 24KG</b>	<b>N.W: 21KG G.W: 25KG</b>	<b>N.W: 22KG G.W: 26KG</b>
<b>Package Size</b>	<b>1100 x 220 x 400mm</b>		
<b>Colours</b>	<b>White / Black</b>		

## OPENING HERO S9

Pull down the **RED** lever using your hand

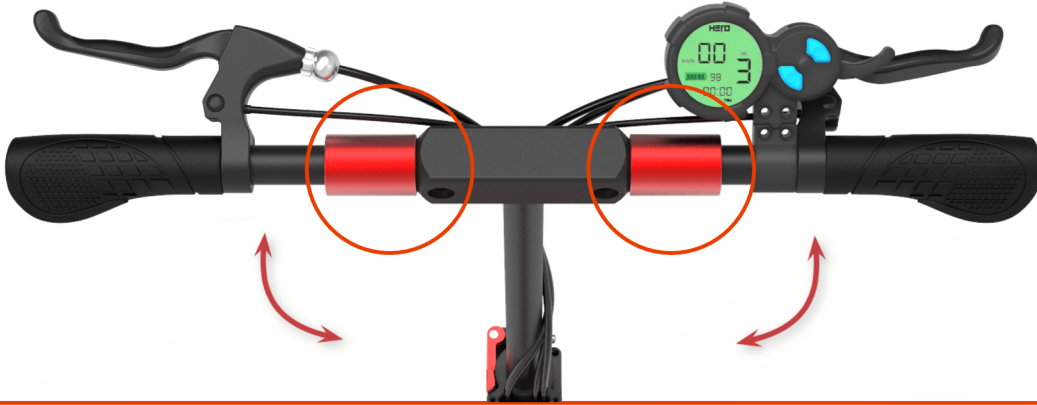
**Step 1**

Pull up and push the steering rod until you hear the click of the locking mechanism

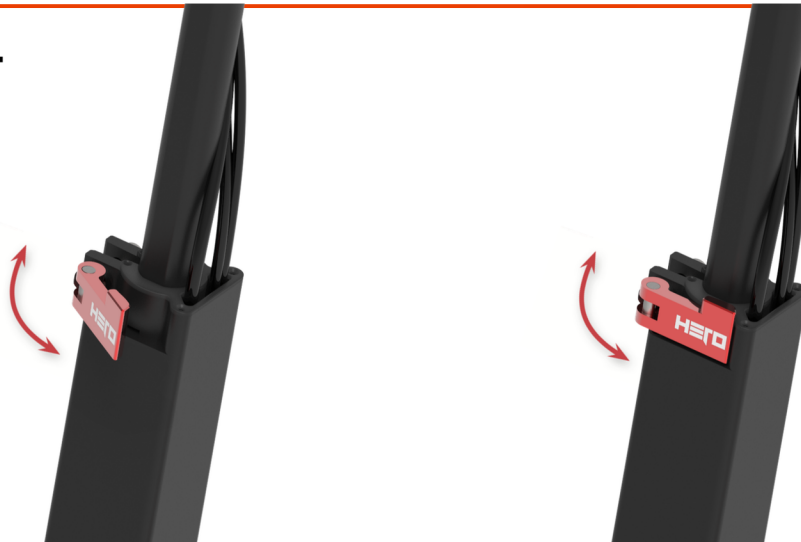
**Step 2**

## OPENING HERO S9

Unfold handlebars and lock them with the **RED** side rings

**Step 3**

Open the quick release and slide the steering rod up to its locking position

**Step 4**

**BATTERY:**

- Do not operate the scooter while charging!
- Do not store the HERO for long period of time with a fully charged battery. If scooter is not in use for the more than one month, keep it under half way charged.
- From time to time discharge the battery by riding HERO using all stored energy in the battery.

**DO NOT USE BATTERY IF THE BOARD:**

- Is broken
- Emits an unusual odour or excessive heat
- Presents any leakage

**Avoid contact with substance leaking from the battery. Keep the battery away from children and pets. Exposure to the battery voltage can cause death or serious injury.**



## CHARGING AND BATTERY:

Your HERO scooter has an external charger. Connect the charging cable to HERO's charging socket on Left side of foot-board.

Then connect the charger's electric cable to an electrical outlet.  
Charging Light Red - Battery is charging.  
Charging Light Green - Charging is complete.

Avoid long periods of time with an uncharged or fully charged battery.

To maximize your HERO's battery performance, fully charge it for 8 hours, once a month.

Unplug HERO from the outlet before installing, removing the battery or performing any maintenance. It is dangerous to work on an HERO Scooter when plugged into an electrical outlet. Electrical shock can cause serious injury and damage the scooter.

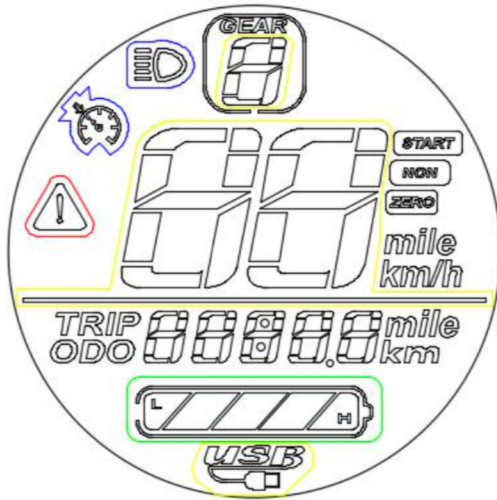
Do not attempt to open the battery. Do not insert anything in the battery and do not attempt to open its case with any tool. Inserting an object into openings or in to the battery can cause electrical shock, injury, burns or fire. Any attempt to open the battery case will damage it and cause release of dangerous toxic substances.

Charge the battery only using tools approved by HERO. Remove the battery and carry HERO according to all applicable local and national requirements.



# THROTTLE OPERATION

## LCD DISPLAY



## THROTTLE FUNCTIONS

- travel speed
- cruise control
- distance
- battery status
- speed mode
- total trip
- background light
- automatic power-off
- ODO

## THROTTLE BUTTON INTRODUCTION

 On/off Button



Finger accelerate

 Mode Button

**DISPLAY POWER ON**

Press  for three seconds power the scooter

**DISPLAY POWER OFF**

Press  for three seconds to shut down the system.

**CHANGE SPEED LEVEL**

Press  to change speed level 1,2,3 Gear

**CHANGE INFORMATION MODEL**

Press  to change TIME -> TRIP -> ODO -> VOL information

**ERROR INDICATION**

- E02 : Brake
- E06 : Battery under voltage
- E07 : Motor fault
- E08 : Turnstile fault
- E09 : Controller fault
- E10 : Communication receiving fault
- E11 : Communication transmission fault
- E12 : BMS

If any of these indication light up, Please refer to your authorized distributor

## P-Setting

When display is on, Press and hold both   for 3 second to enter P-Setting

**P01 : Backlight brightness: 1 Dim , 2 Brighter , 3 Brightest**

**P02 : Speed Unit : 0 = KM , 1 = MILE**

**P03 : Voltage Level : 24V, 36V, 48V, 52V, 60V DEFAULT: 48V**

**P04 : Dormacny time : 0 = no dormancy. Other numbers are dormant time. The range is 1-60 minute. Default : 5**

**P05: Reserve**

**P06: Wheel diameter: The unit is in inch.**

**Default: S8 = 8 , S9 = 8.5**

**P07: Speed measuring magnetic steel number.The range is 0-255. Default:30**

**P08: Rate-limiting: The range is 0-100km/h.Default: 100**

**P09: Zero start, Kick start setting; 0 = zero start. 1 = Kick start. Default: 0**

**P10:Reserve**

**P11: Electric Assist Brake System. The range is 1-5. 0 means no EBS.1 = weakest.5 = strongest.**

**P12: Light and strong start strength.The range is 1-5. The lightest is 1.The strongest is 5. Default: 3**

**P13: Reserve**

**P14: Reserve**

**P15: Controller under-voltage**

**P16: ODO Zero setting: keep pressing + for 5 seconds,ODO will zero clearing.**

**P17: When it shows 0,it cannot use cruise. When it shows 1 cruise mode is on .Default:0**

**P18: Reserve**

**P19: Reserve**

**P20: Communication protocol is defaults 4.It cannot change.**



## LIGHT OPERATION

### ON LIGHTS

Press  for three seconds to ON lights.

### OFF LIGHTS

Press  for three seconds to OFF lights.

### Front LED lights and acrylic light



**WARNING !**

**Certain countries or regions require safety devices or gear. It is your responsibility to know the state laws, and follow them.**

**HELMET: most serious injuries that occur while riding are head injuries. This can be prevented if a helmet is worn. You must wear a helmet while riding your HERO . The helmet must be worn according to its instructions.**

**MECHANICAL SAFETY TESTS:**

**Before using HERO Scooter : Perform a visual inspection that all screws and nuts are tight and in place. Note if anything looks amiss, or is showing signs of wear. If you are unsure, bring your HERO scooter to the authorized distributor. Tires and wheels: check the tires for signs of wear. To do this- spin them to make sure that they are not yet in need of replacing. Make sure that the wheels are freely rotating from the brakes. If not, take your HERO scooter to the authorized distributor.**

**Before each ride, always check your brakes and mechanical function.**

**SAFE DRIVING:**

**Get to know scooter before driving it. Test your control over it. Make your turns slowly and cautiously, and give yourself stopping distance.**

**Your driving capability - to gain control over your scooter, practice your first ride on scooter in an open space with no obstacles to disturb you.**

**DRIVING TECHNIQUE:**

**Foot Position - before riding put your foot as close as possible to the front section of the scooter, and your other foot on the ground. Make sure that your driving route is clear.**

**To start riding, boost yourself forwards (as on non-motorized scooters) with your foot that is on the ground.**

**Immediately after, press the thumb throttle downwards and tilt your body forwards so you shouldn't fall backwards during acceleration. HERO will be in motion.**

**Avoid putting your body pressure on the handle bars in acceleration and deceleration!**

**Keep one foot behind the other, (it's more comfortable to place one foot forward and the other one turned backwards at 70-90°, like on skate/surfboard). It will help you gain more stability.**

**NOTICE:**

**Riding, like most sports, involves risks of injury and damage. By choosing to ride HERO the responsibility and all inherent risk is on you. It is crucial that you know, understand and act according to safety rules.**

## DRIVING TECHNIQUE

**Turns** - The turns on HERO are done as on surf/ski/snowboard. The handlebar should be in parallel to the body. Before turning look at the approaching direction and make sure turning is safe.

**Braking** - Tilt your weight backwards so that the brake action will come through the feet and not through the handlebar and steering system.

It is best to learn how to adjust the centre of gravity during stopping, otherwise there is a dual concern: forward turning over, ("Stopy") and/or wear and breaking of the handlebar and steering system.

**For more rigid feel:**

**Use Allen Key number 4 to release tension on both sides of M6 screws as shown on Figure 1.**

**Then use Allen Key number 3 and gently tighten both screws as shown on Figure 2.**

**Test the function and only then, tighten back both sides of M6 screws (Figure 3)**

**For easier folding:**

**Use Allen Key number 4 to release tension on both sides of M6 screws as shown on Figure 1.**

**Then use Allen Key number 3 and gently release tension on both screws as shown on Figure 2.**

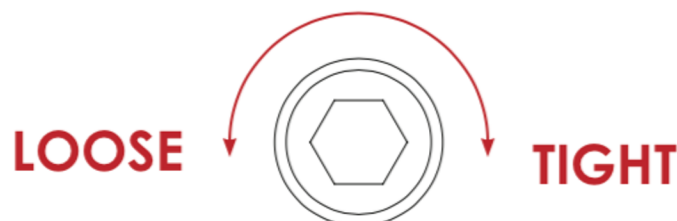
**Be aware that the distance is only a few millimetres. Be careful that the screws will not fall out of their place.**

**Test the function and only then, tighten back both sides of M6 screws (Figure 3)**

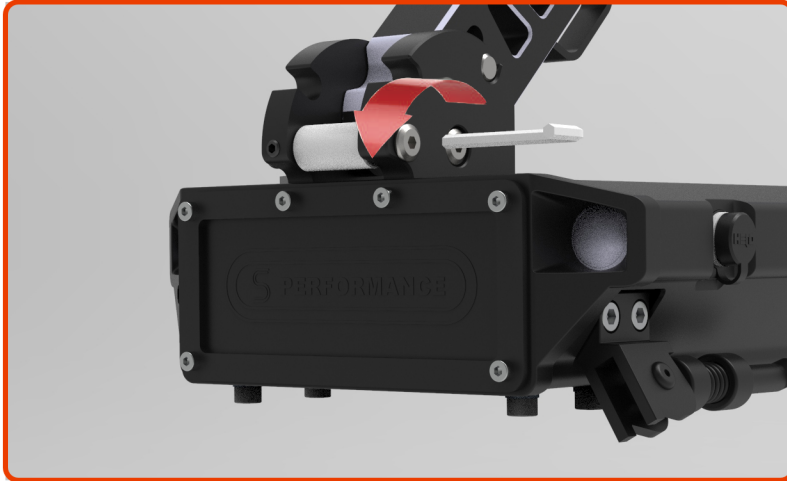
#### SUMMARY

**TIGHT = RIGID MECHANISM**

**LOOSE = EASY FOLDING**



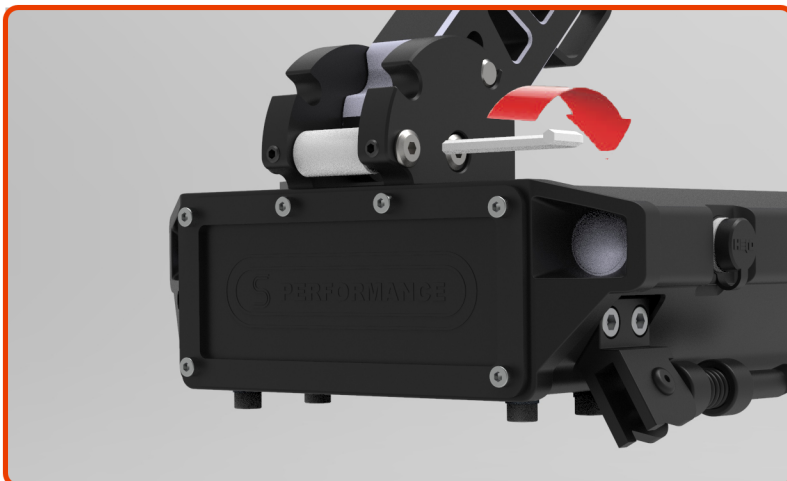
# FOLDING MECHANISM ADJUSTMENT



**Figure 1**  
**Use Allen key to release outer screw on both side**



**Figure 2**  
**Slightly tight or release screws in order to get a rigid or easy action**



**Figure 3**  
**Use Allen key to tight outer screw on both sides**

# HERO

MOBILITY REDEFINED

Be a HERORIDER

Congratulations on your new HERO scooter.

A big thank you for being part of our vision, reducing the carbon foot prints as we travel this little planet.

We are excited to reveal our scooter, the most incredible vehicle in world. The range and the best riding experience you will ever have. We have created the HERO so you, the rider, can seamlessly integrate it into your daily commute.

Enjoy, ride and have fun.

Herorider team



